

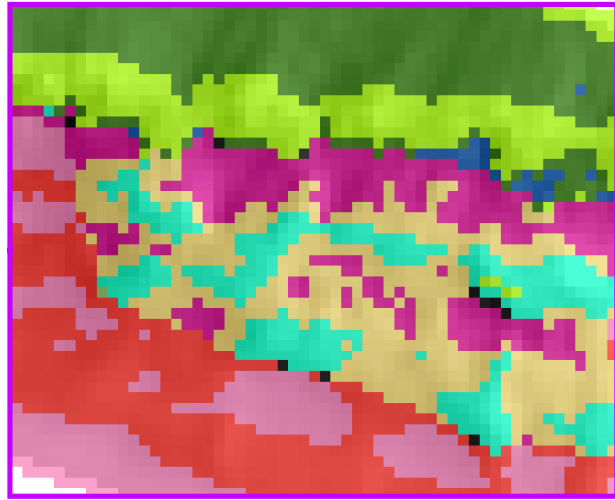
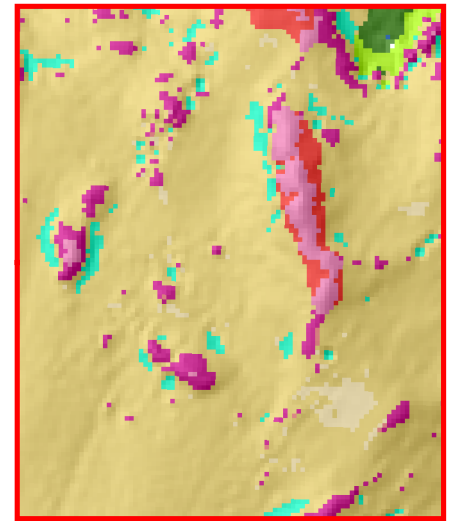
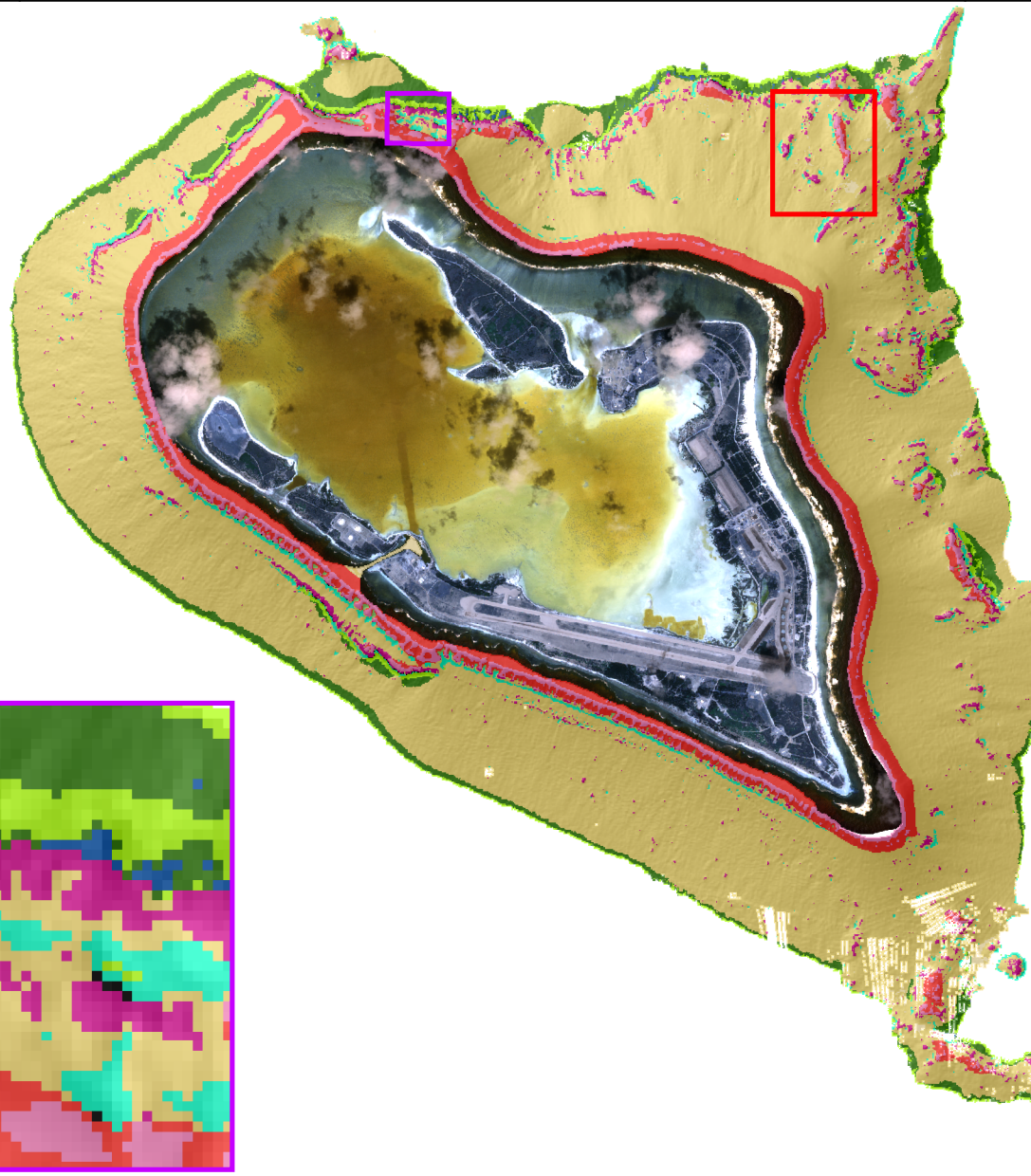
166°35'E

166°40'E

19°20'N

BPI Structures

- Narrow Depression
- Depression on Flat
- Midslope Depression
- Depression on Crest
- Open Depression
- Broad Flat
- Crest in Depression
- Crest on Flat
- Midslope Crest
- Narrow Crest
- Broad Crest
- Near Vertical Wall
- Slope



19°15'N

166°35'E

166°40'E

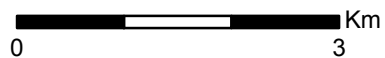
Wake Island

BPI Structures

10-m grid cell size
NOAA PIFSC Coral Reef Ecosystem
Division, Pacific Islands Benthic
Habitat Mapping Center

NOT FOR NAVIGATION

UTM Projection, Zone 58N
Ellipsoid: WGS84



Wake Island Bathymetric Position Index (BPI) Structures are derived from two scales (50 and 250) of a focal mean analysis on bathymetry and slope to predict reef structures. Three ranges of slope define flats, slopes, and near vertical: $x < 5$; $5 < x < 70$; $x > 70$. IKONOS imagery by Space Imaging also shown. See metadata for more information.

