

145°36'0"E

145°38'0"E

145°40'0"E

145°42'0"E

145°44'0"E

18°48'0"N

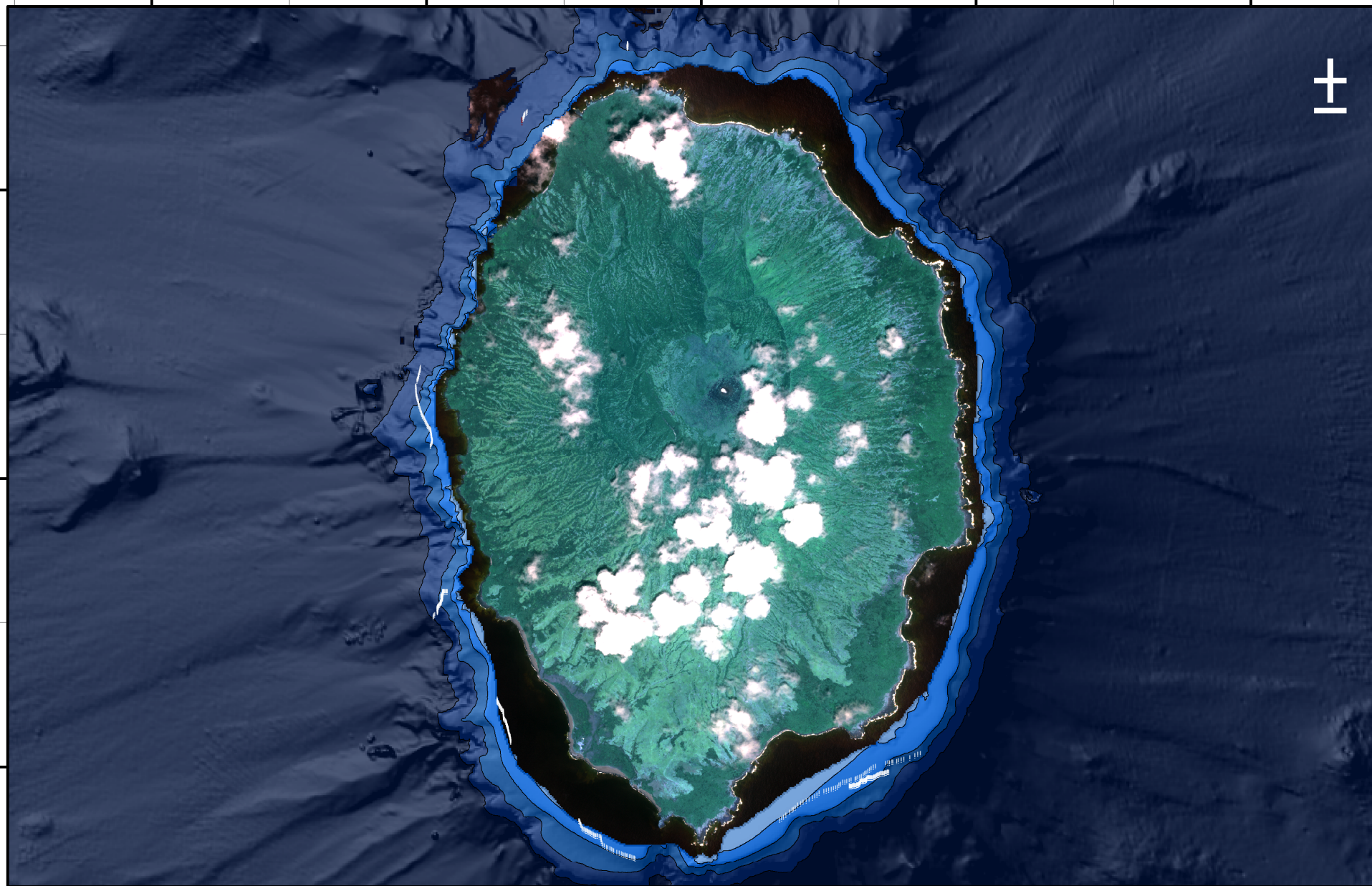
18°46'0"N

18°44'0"N

18°48'0"N

18°46'0"N

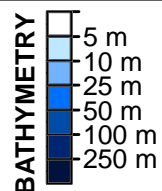
18°44'0"N



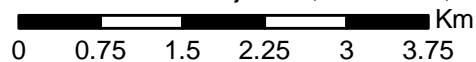
Agrihan Optical Validation

Photo and video classification results plotted on multibeam bathymetry and IKONOS derived depths.

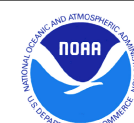
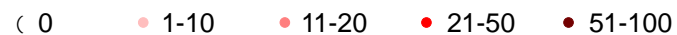
NOT FOR NAVIGATION



Universal Transverse Mercator Projection, Zone 55N, Ellipsoid: WGS84



PERCENT COVER OF SCLERACTINIAN CORAL



**Coral Reef
Ecosystem Division**