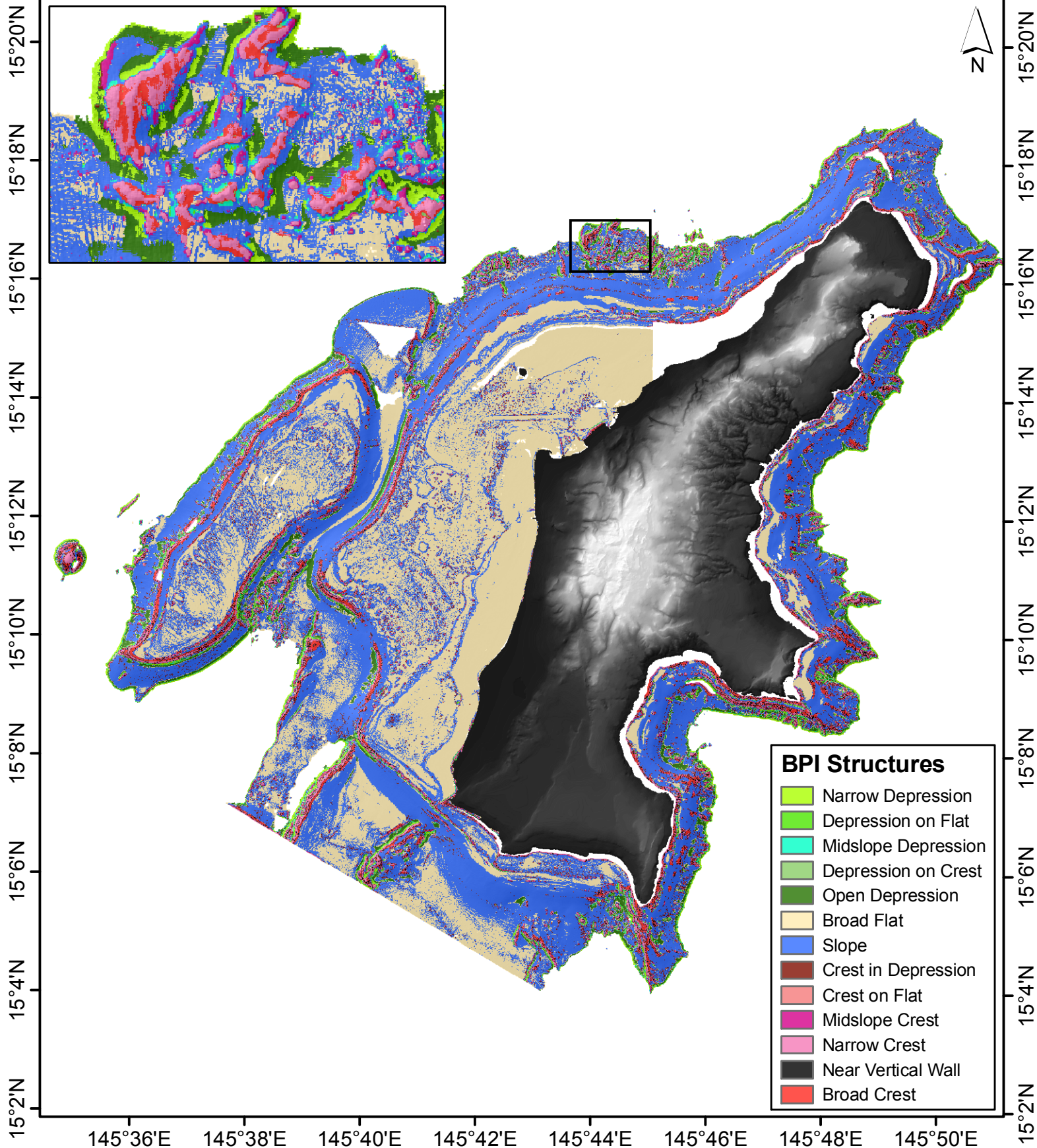


145°36'E 145°38'E 145°40'E 145°42'E 145°44'E 145°46'E 145°48'E 145°50'E



Saipan Island BPI Structures

NOAA Coral Reef Ecosystem Division

Derived from multibeam bathymetry collected aboard NOAA Ship Hi'ialakai and R/V AHI, and US Naval Ship Sumner; and lidar collected by Naval Oceanographic Office. USGS DEM also shown.

NOT FOR NAVIGATION

UTM Projection 55N
Ellipsoid WGS84

0 3 6 km

5-m grid cell size

