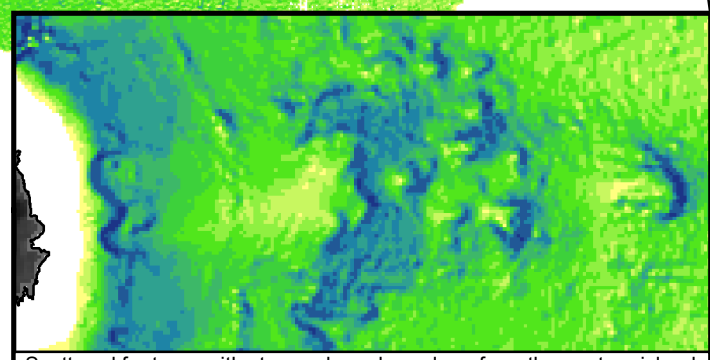
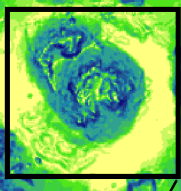
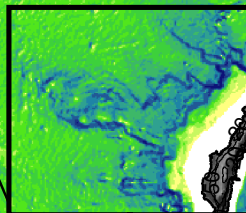
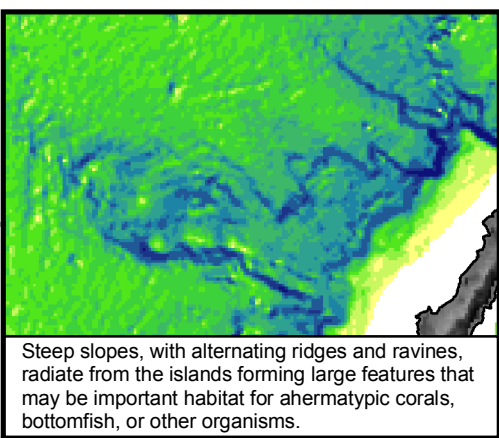
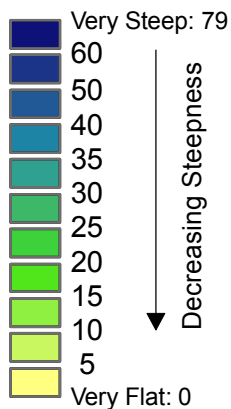


145°10'E

145°12'E

145°14'E

Slope (degrees)



20°4'N

20°4'N

20°2'N

20°2'N

20°N

20°N

145°10'E

145°12'E

145°14'E

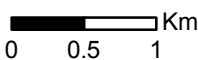
Maug Island Slope

10-m grid cell size

NOAA PIFSC Coral Reef Ecosystem Division, Pacific Islands Benthic Habitat Mapping Center

NOT FOR NAVIGATION

UTM, Zone 55N, WGS84



Slope is derived, with the ArcGIS Spatial Analyst extension, from multibeam bathymetry collected aboard the NOAA Ship Hi'ialakai and R/V AHI. The slope value of each cell is the maximum change in elevation, in degrees, between the cell and its 8 neighboring cells. Grayscale elevation data, in meters, are courtesy of the USGS. See metadata for more information.

