

145°45'30"E

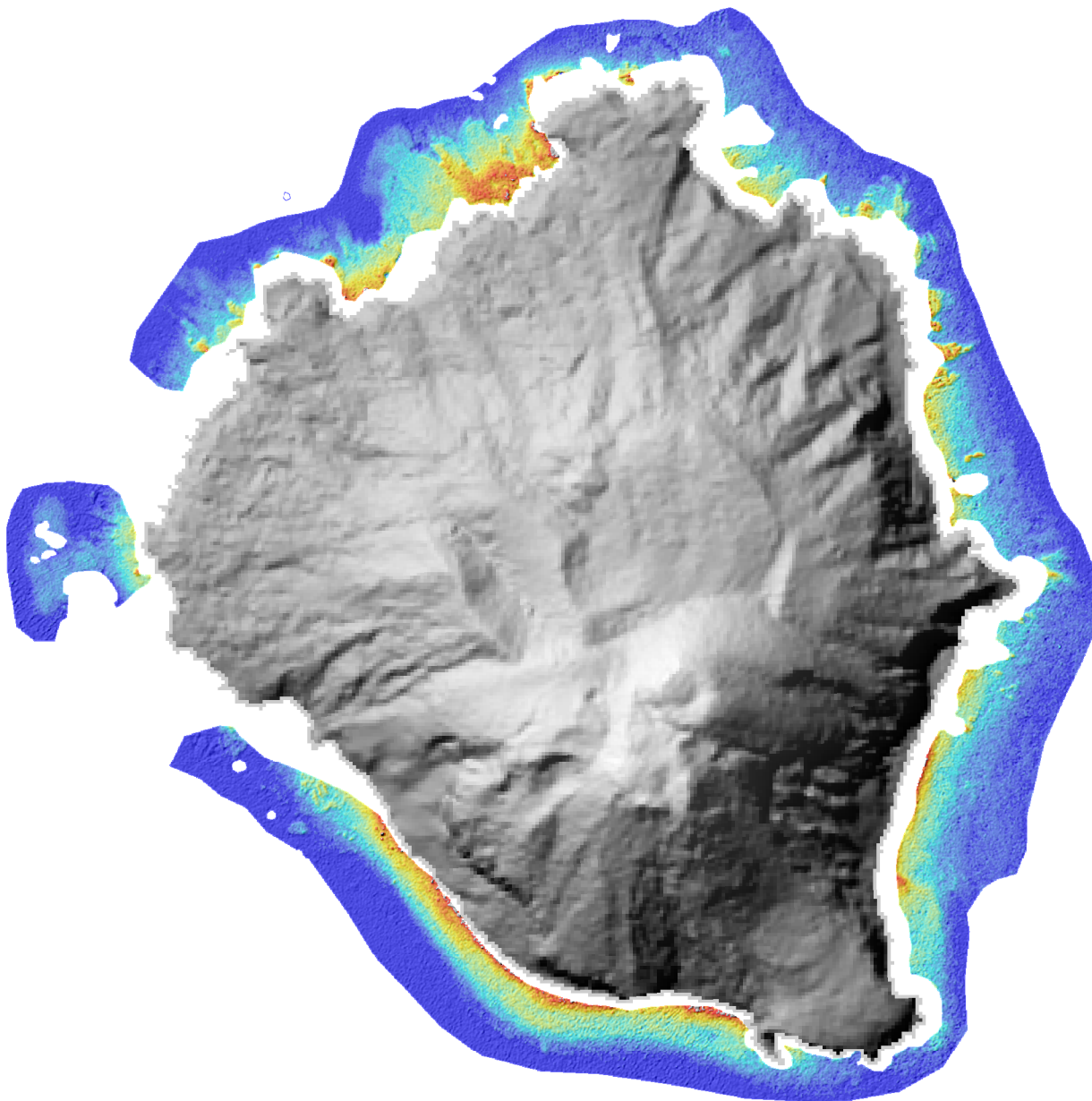
145°46'35"E

145°47'40"E



16°42'30"N

16°41'25"N



### Sarigan Island Bathymetry

2m grid cell size  
NOAA Coral Reef Ecosystem Division

Data include WV-2 derived depths.  
USGS DEM also shown.

**Not For Navigation**

Universal Transverse Mercator Projection,  
Zone 55N, Ellipsoid: WGS84

