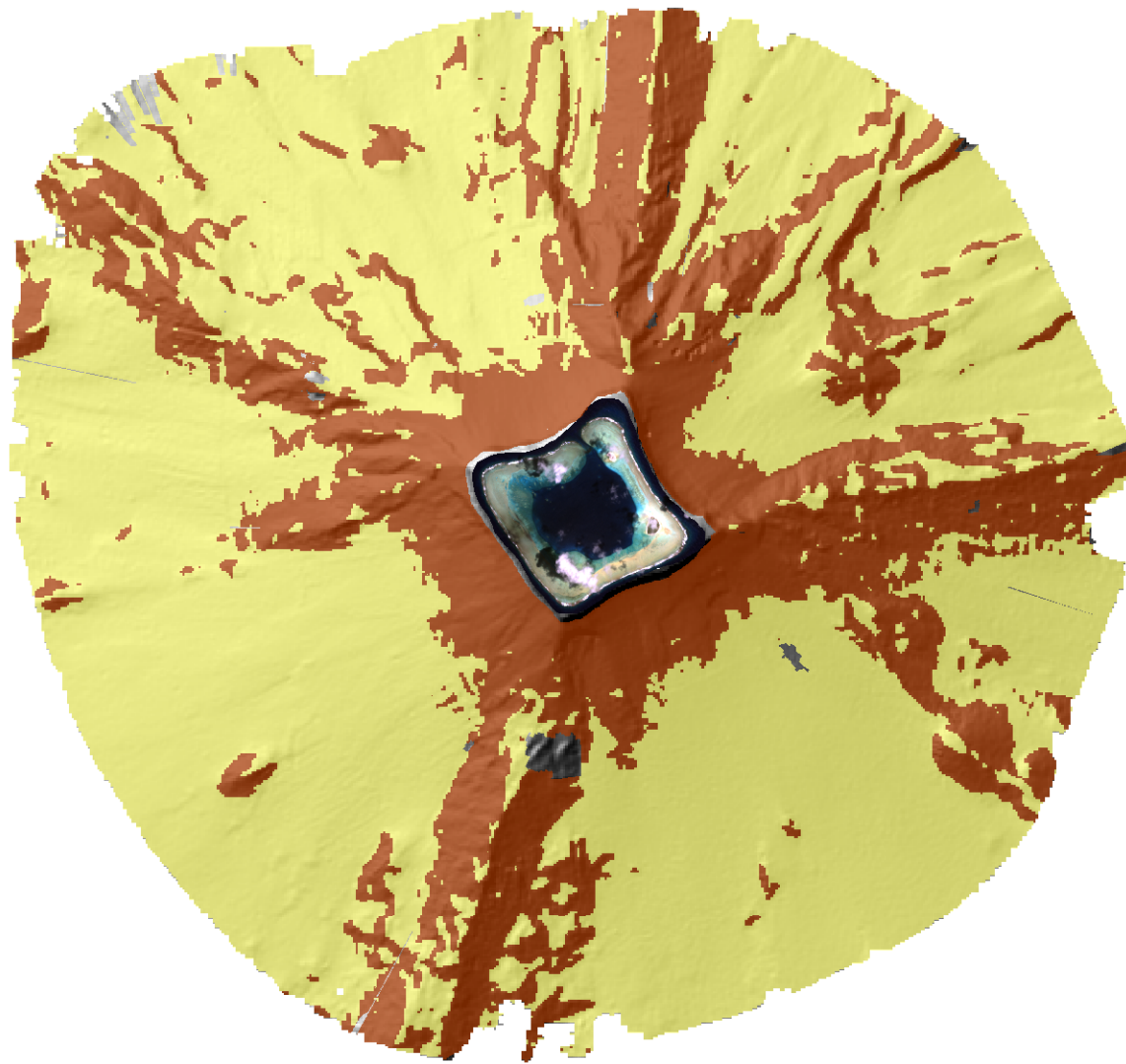


168°17'W 168°15'W 168°13'W 168°11'W 168°9'W 168°7'W 168°5'W 168°3'W 168°1'W

14°28'S
14°30'S
14°32'S
14°34'S
14°36'S
14°38'S

14°28'S
14°30'S
14°32'S
14°34'S
14°36'S
14°38'S



168°17'W 168°15'W 168°13'W 168°11'W 168°9'W 168°7'W 168°5'W 168°3'W 168°1'W

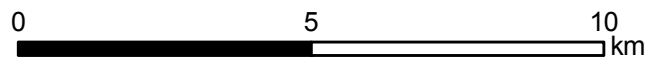
Rose Atoll Hard and Soft Bottom

NOAA Coral Reef Ecosystem Division

Unsupervised classification of hard and soft substrata, derived from multibeam bathymetry and backscatter collected aboard R/V AHI. Also displayed is IKONOS satellite image from Space Imaging. 40m grid cell size.

NOT FOR NAVIGATION

UTM Projection 2S, Ellipsoid WGS84



 Hard bottom  Soft bottom

