

## **JIMAR ANNUAL REPORT FOR FY 2011**

**P.I. NAME:** Kevin Weng, Simon Hoyle, Fabrice Bouye, Shelton Harley

**NOAA OFFICE** (*Of the primary technical contact*): PIFSC

**NOAA SPONSOR NAME:** Sam Pooley

**PROJECT PROPOSAL TITLE:** Improved effectiveness of WCPFC through better informed fishery decision makers.

**FUNDING AGENCY:** NOAA

**NOAA GOAL** (*Check those that apply*):

- To protect, restore, and manage the use of coastal and ocean resources through ecosystem-based management
- To understand climate variability and change to enhance society's ability to plan and respond
- To serve society's needs for weather and water information
- To support the nation's commerce with information for safe, efficient, and environmentally sound transportation.
- Mission Support

**PURPOSE OF THE PROJECT** (*One paragraph*):

To develop a tool that will allow WCPFC decision makers to interact directly with stock assessments, and observe how alternative management strategies may affect both them and other interested parties. This application will a) help decision makers to become familiar and comfortable with the stock assessment's predictions, b) allow decision-makers to explore a greater range of management options than they can at present, including those they see as more relevant to them, c) allow decision makers to discuss potential outcomes, and compare alternative strategies, with their industry representatives, and d) allow each group to see how the various options they are considering may affect them and the parties they negotiate with, by providing a greater and more relevant range of outputs.

**PROGRESS DURING FY 2011** (*One-two paragraphs*):

*Include a comparison of the actual accomplishments to the objectives established for the period, along with reasons for the slippage if established objectives were not met*  
Work on this project continued in FY 2011. The project is due to finish in February 2012. The following objectives have been met this year: a) Trained and supported participants, or demonstrated application, and obtained feedback from SPC-GEF stock assessment

training workshops in 2010, December PFRP meeting, FFA management options meetings, and the Western Pacific Fisheries Management Council. Application used by WPFMC in early 2011 to examine management options. b) Installation wizard developed. c) Developed automatic update features, via website. d) Allow the user to choose the species and model run. e) Provided options for exporting graphs and tables to excel, pdf, and image formats. f) Set up web-based support, e.g. Frequently Asked Questions and email technical support. g) Produced user manual – available on website. h) Application released via website '[www.tumas-project.org](http://www.tumas-project.org)', and publicized in March 2011. i) Trained and support participants at 2011 SPC-GEF stock assessment training workshops. TUMAS was placed at the center of the advanced workshop and used over 3 days for training exercises.

**PLANS FOR THE NEXT FISCAL YEAR** (*One paragraph*):

Plans for fiscal year 2012 include a) presenting TUMAS at WCPFC SC7 (August 2011), FFA management options workshops, at a training workshop in Hawaii, and at the WCPFC Commission meeting (December 2011). b) Developing encrypted database approach to permit analysis of fine-scale spatial and temporal closures. c) Publishing a paper in primary literature on the use of scientific information in fishery decision-making. d) Presenting a paper describing TUMAS at SC7 (August 2011).

**LIST OF PAPERS PUBLISHED IN REFERRED JOURNALS DURING FY 2011  
OTHER PAPERS, TECHNICAL REPORTS, ETC.**

**PUBLICATION COUNT**

*\*complete excel attachment (JIMAR publications request)*

**None**

**GRADUATES:**

*Names of students graduating with MS or PhD degrees during FY 2011; Titles of their Thesis or Dissertation*

NA

**AWARDS:**

*Name of JIMAR employees or project receiving award during the period, and Name of award*

NA

**PERSONNEL** (*on Subcontracts*):

*For projects that awarded subcontracts in the fiscal year, please provide the number of supported postdocs and students from each subgrantee.*

NA

**IMAGES AND CAPTIONS:**

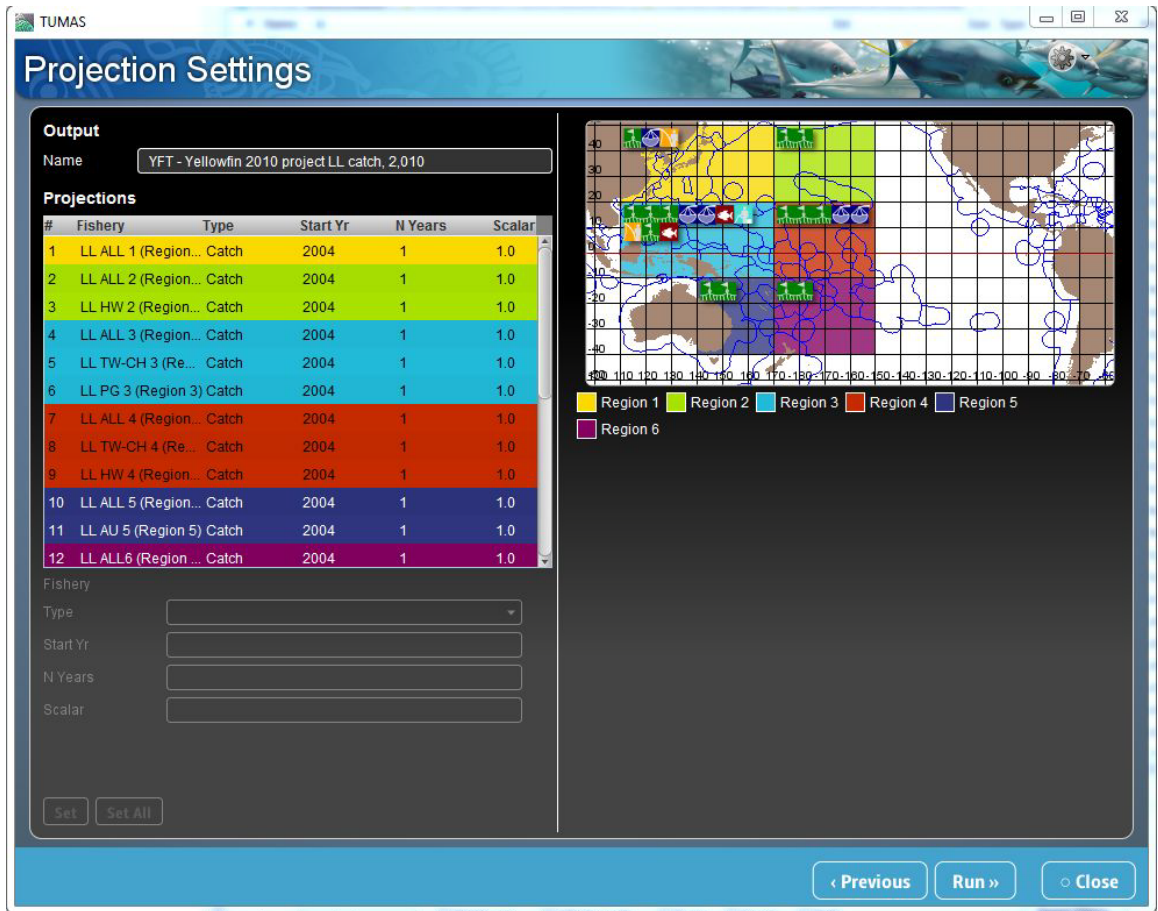
*We will also be including images for the annual report. Please send two of your best high-resolution, color images (photo, graphic, schematic) as a **JPEG or TIFF (300 dpi)** with a caption for each image. If you do not have an electronic version of the image, a hardcopy version may be dropped off at the JIMAR office located in the Marine Sciences Building, Room 312*



- Caption 1: The project web page at [www.tumas-project.org](http://www.tumas-project.org), where TUMAS can be downloaded.



- Caption 2: The welcome screen for the TUMAS software.



- Caption 3: The projection settings screen TUMAS software, where the future catch and effort can be adjusted.

**ACRONYMS:**

*Please provide the complete descriptions for any acronyms used in any areas of the report. For example: UH (University of Hawaii)*

TUMAS – Tuna Management Simulator

FFA - Forum Fisheries Agency

SPC – Secretariat of the Pacific Community

GEF – Global Environment Facility

WCPFC – Western and Central Pacific Fisheries Commission

SC7 – Scientific Committee 7 (SC of the WCPFC)