

## JIMAR ANNUAL REPORT FOR FY 2008

P.I./SPONSOR NAME: Edward W. Glazier, Ph.D., Principal Investigator, Impact Assessment, Inc. / Dr. John Sibert, PFRP

NOAA OFFICE (Of the primary technical contact): PIFSC

PROJECT PROPOSAL TITLE: "Human Dimensions Analysis of Hawaii's *Ika-Shibi* Fishery"

FUNDING AGENCY: NOAA

NOAA GOAL (Check those that apply):

- To protect, restore, and manage the use of coastal and ocean resources through ecosystem-based management
- To understand climate variability and change to enhance society's ability to plan and respond
- To serve society's needs for weather and water information
- To support the nation's commerce with information for safe, efficient, and environmentally sound transportation

PURPOSE OF THE PROJECT (One paragraph):

This project, "Human Dimensions Analysis of Hawaii's *Ika-Shibi* Fishery," is closely related to the PFRP project titled "Small Boat Bigeye and Yellowfin Tuna Operations and Regulatory Scenarios in the Main Hawaiian Islands." The overarching goal of both projects was to provide PFRP and the Western Pacific Regional Fishery Management Council (the Council) with valid and reliable information regarding historic and contemporary trends in the commercial small boat handline fisheries around the Main Hawaiian Islands. The specific goal of the *ika-shibi* project was to generate descriptive information and analysis needed to optimally manage the historically productive *ika-shibi* (squid-tuna) fishery and associated resources. More specifically, the project was designed to to: (1) describe how the fishery has been and is configured in social and economic terms, (2) identify and analyze factors that have influenced change in rates of participation and production over time, and (3) describe and explain how and why participants have been implicated in and/or have reacted to such changes.

PROGRESS DURING FY 2008:

The proposed goals and objectives of this project were met during FY 2007. However, additional data collection and a variety of analyses were undertaken during FY 2008 in order to provide Council staff with new information needed in advance of upcoming management decisions regarding non-longline pelagic fisheries in the Main Hawaiian Islands. This information included: (a) detailed description, analysis, and spatial

depiction of long-term trends in non-longline catch and effort in the nearshore and far offshore waters around the MHI, (b) description and analysis of contemporary challenges in the fisheries, and (c) analysis of potential fishery management options. The new materials were presented at the 2008 Pacific Pelagic Plan Team meeting, the 98<sup>th</sup> Scientific and Statistical Committee meeting, and the 142nd full Council meeting. The information was also presented by Council staff at public scoping meetings on Hawaii Island, Maui, and Oahu. The analyses are being incorporated into the forthcoming project report, which will include findings from both PFRP handline projects.

**PLANS FOR THE NEXT FISCAL YEAR:**

None (project completed)

**LIST OF PAPERS PUBLISHED IN REFERRED JOURNALS DURING FY 2008:**

None

**OTHER PAPERS, TECHNICAL REPORTS, ETC.:**

PFRP report near completion

**GRADUATES:**

Dr. Courtney Carothers, who conducted extensive fieldwork for the project prior to FY 2008, completed her doctorate at the University of Washington, Department of Anthropology, with a dissertation titled: "Privatizing the Right to Fish: Challenges to Livelihood and Community in Kodiak, Alaska."

Dr. Janna Shackeroff, who also conducted extensive fieldwork for the project prior to FY 2008, completed her doctorate at Duke University's School of the Environment with a dissertation titled "The History, Ecology, and Social-Ecological Systems of Kona Coast Coral Reefs: Towards 'Peopled' Approaches to Marine Science and Management."

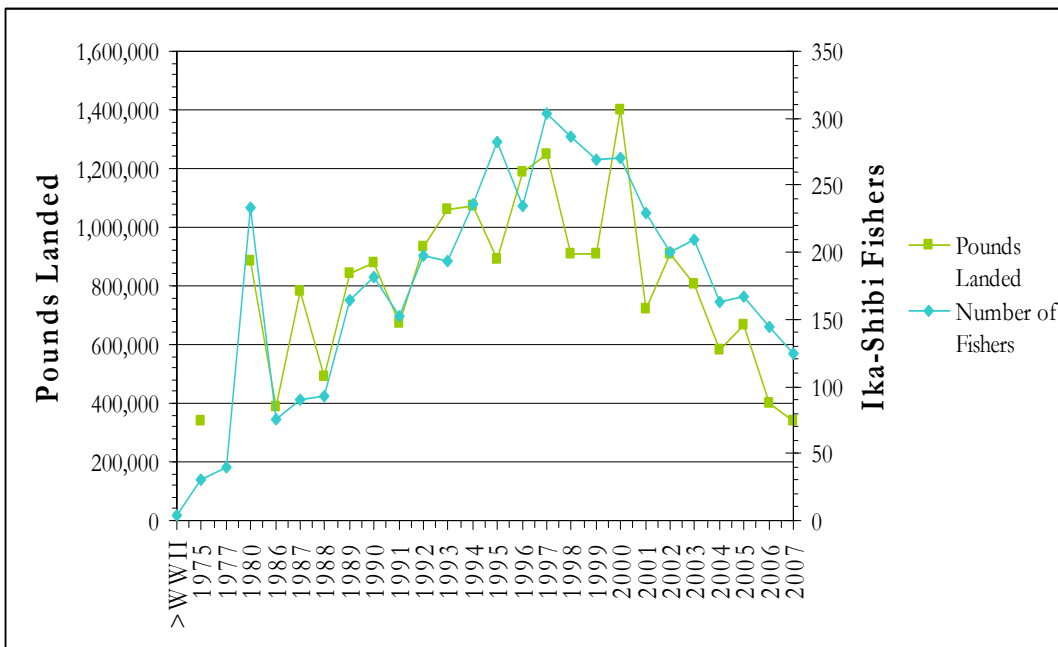
AWARDS: None

PUBLICATION COUNT: None to date

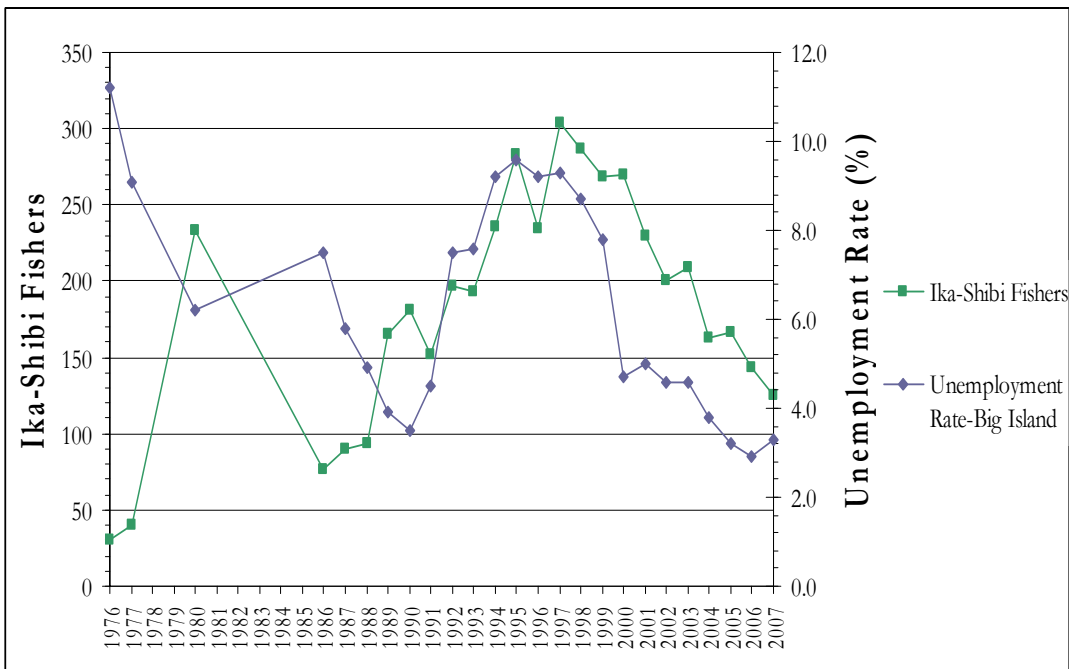
PERSONNEL: Not applicable for FY 2008

**IMAGES AND CAPTIONS:**

(See following page)



Long-Term Trends in Landings and Participation in Hawaii's Ika-Shibi Fishery



Participation in the Ika-Shibi Fishery vis-à-vis the Big Island Unemployment Rate