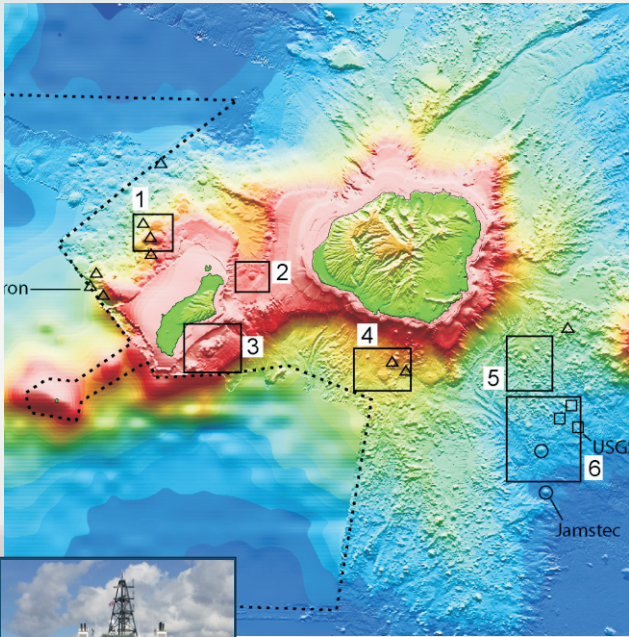


Marine Geology of Kauai Teacher's Workshop

Bringing National Science Foundation Marine Science & Hawaiian Volcanology to Kauai Complex Schools



WHAT

Teacher workshop for K-12 teachers on Kauai

CREDITS

Offering 3 P-DERI Course Credits

DATES

August 18 (8am-4pm)

October 23 (4pm-8pm)

November 6 (4pm-8pm)

November 10 (8am-4pm)

COST

No cost to teachers, materials will be supplied

LOCATION

Chiefess Kamakahelei Middle School Cafeteria

This course is appropriate for all teachers of science, math, or geography in any grade. Twenty inquiry activities which can be differentiated to grade level will be shared. Materials to conduct selected labs with students will be given to participants.

A National Science Foundation research cruise onboard the R/V Kilo Moana using submarine robots for deep water geology on the offshore flanks of Kauai is the impetus of this class. The expedition is in September 2007 and participating classes will have the opportunity submit questions and to interact with the crew through website and email. Teachers in this class will meet the researchers before and after their endeavor. An appropriate portfolio will be required at the end of the course for PDERI credits.



SCHOOL OF OCEAN AND EARTH SCIENCE AND TECHNOLOGY

UNIVERSITY OF HAWAII AT MĀNOA



Yes, please register me for the Marine Geology of Kauai Teacher's Workshop.

Name

School

Grade

Address

Phone

Email

Return to Linda Sciaroni, Waimea Canyon School, 9555 Huakai Street, Waimea, HI 97969

Obtain signature of Principal assuring approval of the course for salary advancement. Obtain signature on form 201a for your files.

Signature of Principal